

# AdminStudio ZENworks Edition

- ♦ “Overview” on page 1
- ♦ “Installing or Updating AdminStudio ZENworks Edition” on page 1
- ♦ “Activating AdminStudio ZENworks Edition” on page 3
- ♦ “Getting Started with AdminStudio ZENworks Edition” on page 5
- ♦ “Software Updates, Licensing, and Support” on page 7
- ♦ “Legal Notice” on page 7

## Overview

*AdminStudio 2024 ZENworks Edition* is a customized version of *Flexera Software AdminStudio 2024 Standard Edition* that integrates with ZENworks to help you create, manage, and distribute Windows software bundles. You receive a license for AdminStudio ZENworks Edition when you purchase ZENworks Configuration Management.

You can use AdminStudio ZENworks Edition to do the following:

- ♦ Capture **legacy software installations** and repackage them as Windows Installer (.msi) packages.
- ♦ Customize **Windows Installer packages**. Edit packages to add, modify, or remove files, registry entries, shortcuts, and directories. Add custom actions to run VB scripts or search for prerequisites. Perform advanced configuration such as setting lock permissions and environment variables, editing XML files, and creating upgrades or patches.
- ♦ Create **transforms** to customize Windows Installer packages, including limiting the features installed, adding custom files to the package, and setting property values.
- ♦ Publish Windows Installer packages as **Windows bundles** to the ZENworks system. You can then use ZENworks Control Center to manage the bundles and distribute them to devices.

Refer to the remaining sections in this document to install, activate, and begin using AdminStudio ZENworks Edition.

## Installing or Updating AdminStudio ZENworks Edition

---

**NOTE:** When installing AdminStudio 2024 ZENworks Edition, the installation wizard displays the version as AdminStudio 2024 R2 Service Pack1. This can be ignored.

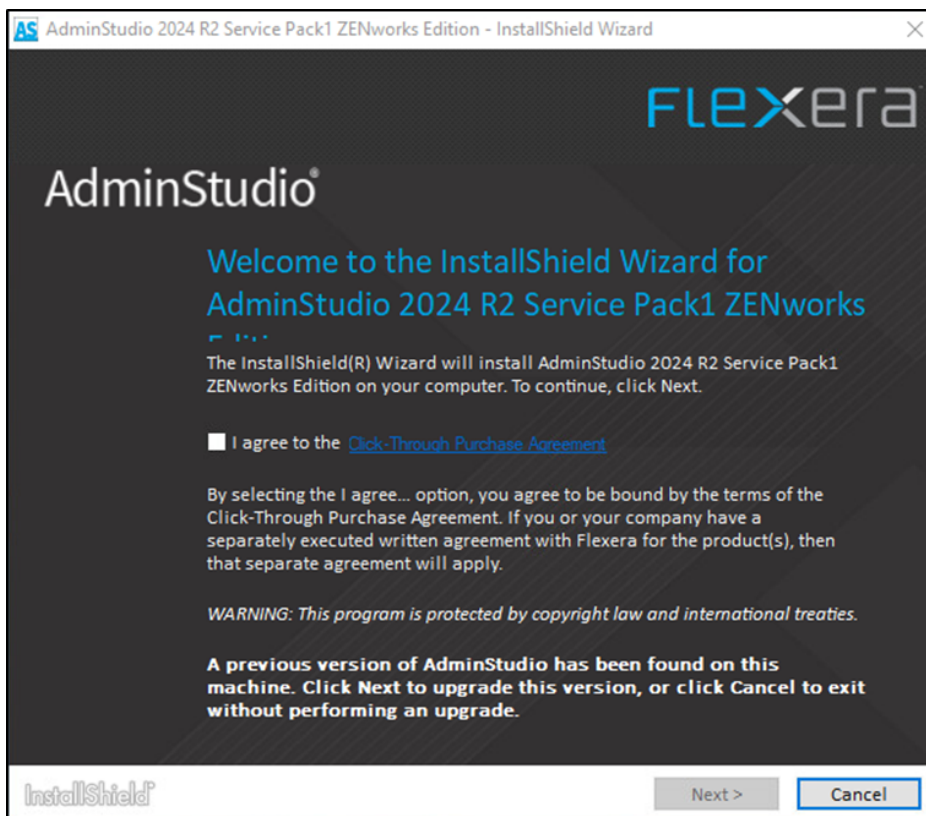
---

For fresh installation or upgrading the existing version of AdminStudio, perform the following steps:

- 1 Copy the `AdminStudio2024ZENworks.exe` file to a machine that meets the following requirements:

<b>OS:</b>	Windows 10 and above
<b>Processor:</b>	32-bit or 64-bit (repackaging of 64-bit applications requires a 64-bit machine)
<b>RAM:</b>	4 GB
<b>Hard Disk:</b>	4 GB
<b>Display:</b>	XGA at 1024x768 resolution or higher
<b>Browser:</b>	<ul style="list-style-type: none"> <li>♦ Chrome version 95 and higher</li> <li>♦ Firefox version 95 and higher</li> <li>♦ Microsoft Edge</li> </ul>
<b>Privileges:</b>	Administrative

- 2 Launch the AdminStudio2024ZENworks.exe file to extract the installation files and display the Welcome screen.




---

**NOTE:** If you are updating from a previous version of AdminStudio ZENworks Edition, the Welcome screen indicates that a previous version is installed and will be updated.

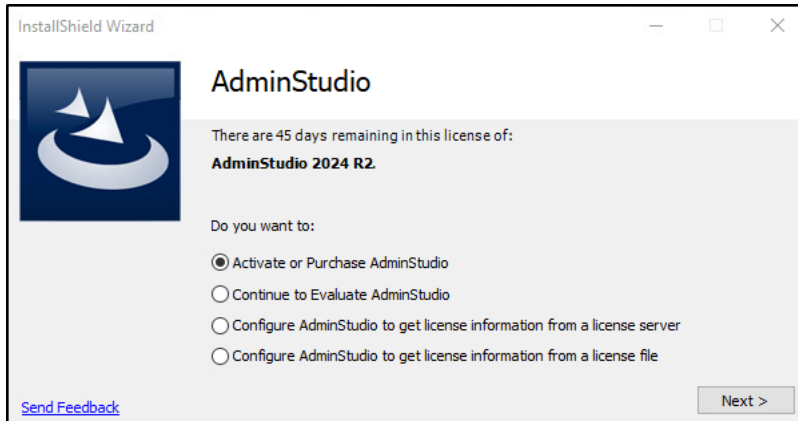
---

- 3 Click **Next** and follow the prompts to install AdminStudio ZENworks Edition.
- 4 When installation is complete, click **Finish** to exit the installation program.
- 5 Continue with the next section, [Activating AdminStudio ZENworks Edition](#).

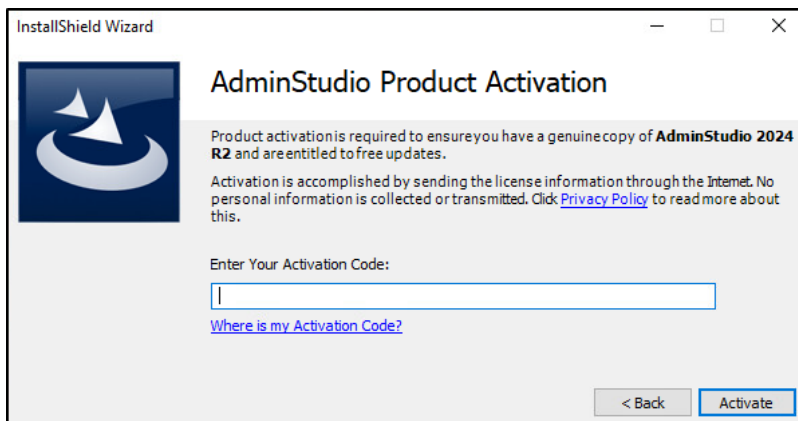
# Activating AdminStudio ZENworks Edition

**NOTE:** You can use the existing AdminStudio license keys or retrieve license keys from the [Customer Care Portal](#) to activate the environment.

- 1 Click the **Start** menu > **AdminStudio** > **AdminStudio 2024** to launch AdminStudio and display the AdminStudio dialog box.

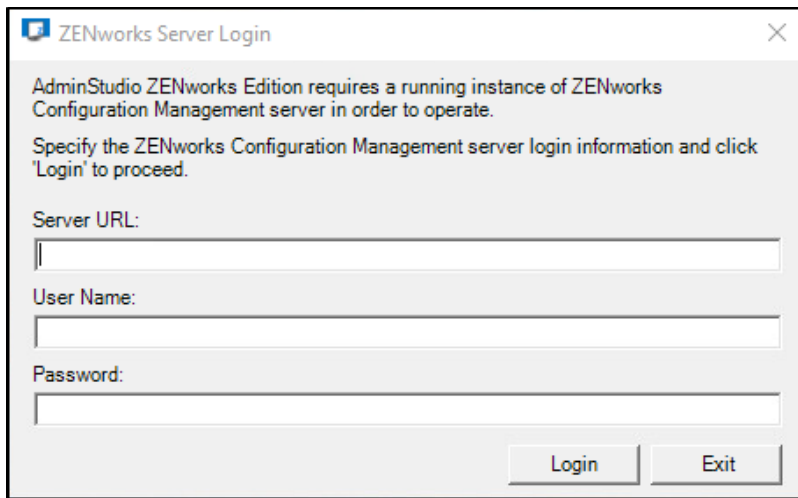


- 2 Select **Activate or Purchase AdminStudio**, then click **Next** to display the AdminStudio Product Activation dialog box.



- 3 Enter your license key, then click **Activate**.

- 4 When activation is complete, click **Finish** to open AdminStudio ZENworks Edition and display the ZENworks Server Login dialog box.

The image shows a Windows-style dialog box titled "ZENworks Server Login". It contains a message stating that AdminStudio ZENworks Edition requires a running instance of the ZENworks Configuration Management server. Below the message are three input fields labeled "Server URL:", "User Name:", and "Password:". At the bottom right, there are two buttons: "Login" and "Exit".

ZENworks Server Login

AdminStudio ZENworks Edition requires a running instance of ZENworks Configuration Management server in order to operate.

Specify the ZENworks Configuration Management server login information and click 'Login' to proceed.

Server URL:

User Name:

Password:

Login Exit

- 5 Fill in the following information to connect to a ZENworks Primary Server, then click **Login**.

**Server URL:** The server's IP address or hostname and the port (default port is 7443), preceded by `https://`. For example:

`http://198.51.100.0:port`

or

`http://zenserver.novell:port`

**User Name:** The name of a ZENworks administrator defined in the ZENworks system.

**Password:** The password of the ZENworks administrator identified in the **User Name** field.

After AdminStudio authenticates to the ZENworks Primary Server, the Getting Started screen is displayed.



6 Continue with the next section, [Getting Started with AdminStudio ZENworks Edition](#).

## Getting Started with AdminStudio ZENworks Edition

AdminStudio ZENworks Edition activates only the AdminStudio features that are required to create and modify Windows Installer (.msi) packages for use in ZENworks. All other AdminStudio features, while still shown in the interface, are disabled.

To launch Distribution Wizard ZENworks Edition, perform the following steps:

- 1 Click the **Start** menu > **AdminStudio** > **Distribution Wizard ZENworks Edition** to launch the AdminStudio Distribution Wizard for ZENworks Configuration Management.
- 2 Click **Next** to display the ZENworks Server Login screen.
- 3 Fill in the following information to connect to a ZENworks Primary Server, then click **Login**.

**User Name:** The name of a ZENworks administrator defined in the ZENworks system.

**Password:** The password of the ZENworks administrator identified in the **User Name** field.

**Server URL:** The server's IP address or hostname and the port (default port is 7443), preceded by https://. For example:

http://198.51.100.0:port

or

http://zenserver.novell:port

After AdminStudio authenticates to the ZENworks Primary Server, the Windows Installer Package Information screen is displayed:

- 4 Click **Browse** next to the Windows Installer Package File (.msi) field and select the .msi file to install.
- 5 Click **Next**. The Bundle Creation Options panel is displayed.
- 6 Choose one of the following options to specify whether to update an existing bundle or create a new one:
  - ♦ **Create a new bundle from these Windows Installer package files** – Select this option to create a new bundle referencing the Windows Installer package.
  - ♦ **Update an existing bundle using these Windows Installer package files** – Select this option if you want to overwrite an existing bundle with the new Windows Installer package. Then, choose an existing bundle from the tree.
- 7 Click **Next** to display the Bundle Information screen.

The screenshot shows the 'Bundle Information' window of the AdminStudio Distribution Wizard. The window title is 'AdminStudio Distribution Wizard for ZENworks Configuration Management'. The main heading is 'Bundle Information' with the subtitle 'Enter information about the bundle to be published'. Below this, a text box says: 'Specify the bundle information used by the ZENworks Configuration Management server to manage your Windows Installer package files and click "Next" to proceed with the distribution process.' The form contains several fields: 'Bundle Name:' with a text input field; 'Version Number:' with a text input field containing '0'; 'Icon:' with a text input field and a 'Browse...' button; 'Folder:' with a dropdown menu showing '/Bundles'; and 'Description:' with a large text area. At the bottom, there are four buttons: '< Back', 'Next >', 'Cancel', and 'Help'. The 'Next >' button is highlighted with a blue border.

- 8 Fill in the following information for the bundle:
  - Bundle Name:** Provide a name for the bundle.
  - Version Number:** Enter the bundle's version number.
  - Icon:** Click **Browse** and select an icon that you want to display on managed devices.
  - Folder:** Enter the name or browse to and select the ZENworks Control Center folder where you want the bundle to reside. The default path is the context from where the bundle creation wizard is invoked.
  - Description:** Provide a short description of the bundle's contents. This description displays in ZENworks Control Center and in the ZENworks Agent.
- 9 Click **Next** to display the Summary page.

Review the information on the Summary page, making any changes to the bundle settings by using the Back button as necessary.

- 10 Click **Publish** to publish the Windows installer package to the ZENworks server.
- 11 When the distribution process is complete, click **Finish**.

## Software Updates, Licensing, and Support

AdminStudio 2024 ZENworks Edition is a custom version of AdminStudio 2024 Standard Edition created specifically for ZENworks customers. The product is neither registered nor activated through Flexera Software. This affects the following:

- ♦ **Software Updates:** AdminStudio ZENworks Edition updates are distributed by Open Text. Neither the AdminStudio 2024 Software Manager nor the InstallShield 2024 Software Manager provided by Flexera Software is used to update the AdminStudio software.
- ♦ **Return License:** Do not use the software's Return License feature (**Help** menu > **About AdminStudio** > **Return License**). The online return process fails and the offline return process makes the software inaccessible.
- ♦ **Support:** Support is provided by [Global Technical Support](#).

## Legal Notice

For information about legal notices, trademarks, disclaimers, warranties, export and other use restrictions, U.S. Government rights, patent policy, and FIPS compliance, see <https://www.microfocus.com/en-us/legal> (<https://www.microfocus.com/en-us/legal>).

© Copyright 2008 - 2025 Open Text

The only warranties for products and services of Open Text and its affiliates and licensors ("Open Text") are as may be set forth in the express warranty statements accompanying such products and services. Nothing herein should be construed as constituting an additional warranty. Open Text shall not be liable for technical or editorial errors or omissions contained herein. The information contained herein is subject to change without notice.

