



FLEXERA SOFTWARE™

AdminStudio®

# AdminStudio 11.0

## Release Notes

26 January 2012

<b>Introduction .....</b>	<b>2</b>
<b>New Features.....</b>	<b>3</b>
<b>Support for Migration to Microsoft System Center 2012 Configuration Manager .....</b>	<b>3</b>
Bulk Import from System Center Configuration Manager .....	4
Support for System Center 2012 Configuration Manager's Application Model.....	4
Detect, View, and Edit System Center 2012 Configuration Manager Application Metadata .....	5
Publish to Microsoft System Center 2012 Configuration Manager .....	7
<b>Software Tagging Support.....</b>	<b>7</b>
<b>Microsoft Server App-V Application Suitability Testing.....</b>	<b>7</b>
<b>AdminStudio Platform API.....</b>	<b>8</b>
<b>Enhanced Application Manager User Interface With Tabbed Ribbon Control .....</b>	<b>8</b>
<b>InstallShield 2012 .....</b>	<b>11</b>
<b>Components/Editions .....</b>	<b>14</b>
<b>System Requirements.....</b>	<b>20</b>
<b>AdminStudio Client Tool Machine.....</b>	<b>20</b>
<b>Application Catalog / Compatibility Solver Database Server .....</b>	<b>21</b>
<b>AdminStudio Enterprise Server / Workflow Manager Server .....</b>	<b>22</b>
<b>Software Repository Server .....</b>	<b>22</b>
<b>Virtual Machines.....</b>	<b>23</b>
<b>Resolved Issues .....</b>	<b>26</b>

# Introduction

AdminStudio 11.0 powers an enterprise's application readiness process, streamlining and accelerating desktop transformation, migration to Windows 7, virtualization, and day-to-day application packaging operations. The features introduced in AdminStudio 11.0 help to significantly reduce complexity associated with the adoption of emerging technologies such as user-centric computing, virtualization and the cloud, while at the same time significantly increasing the ease with which companies can implement their software asset management programs. AdminStudio 11.0 removes a major barrier to cloud adoption by automating the assessment, conversion and publishing of multiple virtual formats to both physical and cloud environments.

- **Support for Microsoft System Center 2012 Configuration Manager**—AdminStudio 11.0, which is built around the user-centric concept, is the first solution to support the upcoming release of System Center 2012 Configuration Manager. To give enterprises advance time to plan for their migration to System Center 2012 Configuration Manager and the accurate identification of metadata crucial for populating Microsoft's new application model, AdminStudio 11:
  - **Includes a new import wizard** to speed the migration to System Center 2012 Configuration Manager and the new application model, including a bulk import utility for migrating applications.
  - **Determines application deployment metadata by mining package elements** like system requirements, detection methods and dependence on other applications such as .NET, prior to creating applications in System Center 2012 Configuration Manager.
  - **Provides a comprehensive user interface** to edit and modify the application model elements, as well as support for MSI, App-V, InstallScript and custom installers.
- **Support for Microsoft Private Cloud**—AdminStudio Virtualization Pack already supports preparation, testing and remediation of virtual desktop applications for deployment, as well as enhanced validation and conflict testing of Microsoft App-V packages. To assist enterprises in planning for which server applications will work in the Cloud and save time and effort in Cloud migration initiatives, AdminStudio Virtualization Pack 11 is the first solution to support testing of applications for Windows Server App-V, a key component of Microsoft's private cloud strategy.
- **Software tagging support**—AdminStudio 11.0 now supports companies' software asset management and enterprise license optimization efforts by empowering enterprises to automatically add or update ISO 19770-2 compliant tags for repackaged applications, as well as preserve the original publisher tag if it exists. Thus enterprises can now leverage those ISO 19770-2 tags to identify the application after installation.

# New Features

AdminStudio 11.0 includes the following new features:

- [Support for Migration to Microsoft System Center 2012 Configuration Manager](#)
- [Software Tagging Support](#)
- [Microsoft Server App-V Application Suitability Testing](#)
- [AdminStudio Platform API](#)
- [Enhanced Application Manager User Interface With Tabbed Ribbon Control](#)
- [InstallShield 2012](#)

## Support for Migration to Microsoft System Center 2012 Configuration Manager

AdminStudio 11.0 provides several new features to help customers speed their migration to Microsoft System Center 2012 Configuration Manager. These new features help to ease the transition from System Center Configuration Manager's previous package-based model to its new application-based model.

This support for both the package-based and application-based models of System Center Configuration Manager helps ease your migration to System Center 2012 Configuration Manager's application-based model by encouraging the following workflow:

- **Step 1: Import packages** from a previous version of System Center Configuration Manager. Upon import, packages are converted to applications in the Application Catalog.
- **Step 2: Test packages and review deployment data** to ensure that their deployment by System Center 2012 Configuration Manager will be successful.
- **Step 3: Publish applications** to System Center 2012 Configuration Manager, completing the migration.

AdminStudio's System Center 2012 Configuration Manager support covers four areas of functionality:

- [Bulk Import from System Center Configuration Manager](#)
- [Support for System Center 2012 Configuration Manager's Application Model](#)
- [Detect, View, and Edit System Center 2012 Configuration Manager Application Metadata](#)
- [Publish to Microsoft System Center 2012 Configuration Manager](#)

## Bulk Import from System Center Configuration Manager

AdminStudio 11.0 supports the bulk import of applications from System Center 2012 Configuration Manager, while maintaining its support for package import from earlier releases of Configuration Manager.

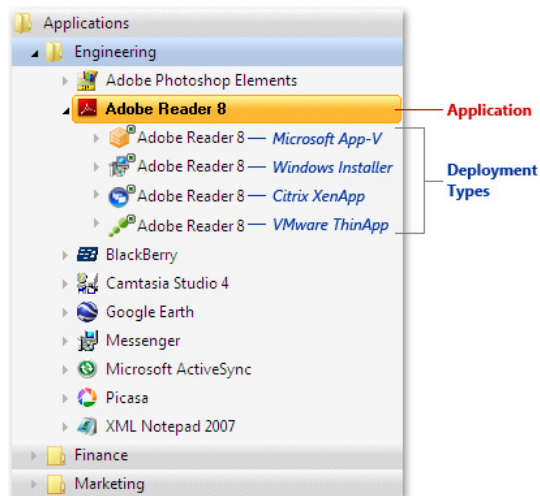
When performing an import, you can choose to either import *applications* from System Center 2012 Configuration Manager or to import *packages* from any version of System Center Configuration Manager. After providing login credentials, you are presented with the directory structure from the connected System Center Configuration Manager server, and can choose to import some or all of those packages or applications.

When importing packages from previous versions of System Center Configuration Manager, you will have the option of selecting the **Show only good candidate packages (MSI)** option to filter the list so that it only displays packages which are good candidates for migration to System Center 2012 Configuration Manager's application model. When performing this check, AdminStudio uses criteria such as checking to see if the package's File table lists files or if the package has been deployed during the last year.

## Support for System Center 2012 Configuration Manager's Application Model

In previous releases, AdminStudio's Application Catalog was organized into packages of multiple deployment types, categorized into user-defined groups. Since the Version 10.0 release, AdminStudio has used the application-centric organization model, the same application model used in System Center 2012 Configuration Manager.

In Application Manager, the parent application node listed in the Application Manager tree, represented by an icon found in the application, with its packages (deployment types) listed as subnodes under it.

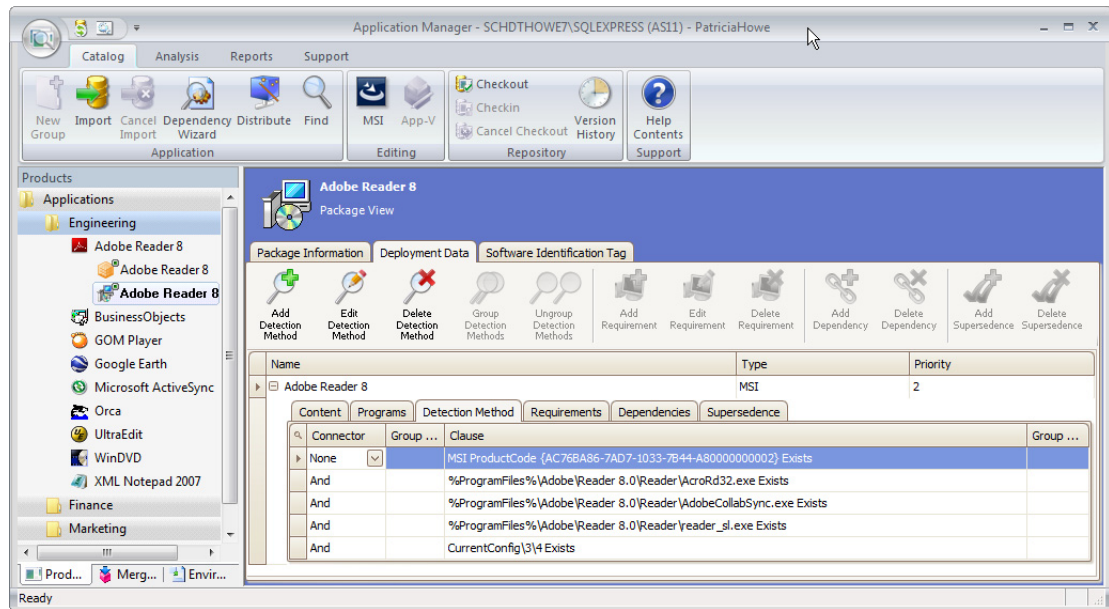


**Figure 1:** Application Manager 11.0 Tree View

## Detect, View, and Edit System Center 2012 Configuration Manager Application Metadata

It is critical to have comprehensive, accurate metadata associated with each package when using System Center 2012 Configuration Manager for deployment. In the System Center 2012 Configuration Manager interface, this metadata is displayed for each application and package in a multi-layered series of tabs, panes, and dialog boxes. This information layout can make viewing and editing metadata in the System Center 2012 Configuration Manager interface cumbersome and time consuming.

AdminStudio 11.0 displays application metadata in a multi-tabbed, organized format that is easy to navigate through and to update. The following is a view of the detection methods specified for a Windows Installer package:



**Figure 2:** Detection Method Subtab of Package View / Deployment Data Tab

### Package Metadata Access and Organization

When a package is imported into the Application Catalog, Application Manager mines package elements for deployment data such as detection methods, dependencies, and requirements—valuable information to have when deploying Windows Installer or App-V packages using System Center 2012 Configuration Manager. This data is displayed on the six subtabs of the **Deployment Data** tab of the **Package View**:

- **Content**—General information about the package.
- **Programs**—Command line parameters for installation and uninstallation.
- **Detection Method**—Methods to detect whether this package is already installed on the target system.
- **Requirements**—Methods to determine whether the target system meets minimum requirements to run this application.
- **Dependencies**—List of other applications this application depends upon to run.

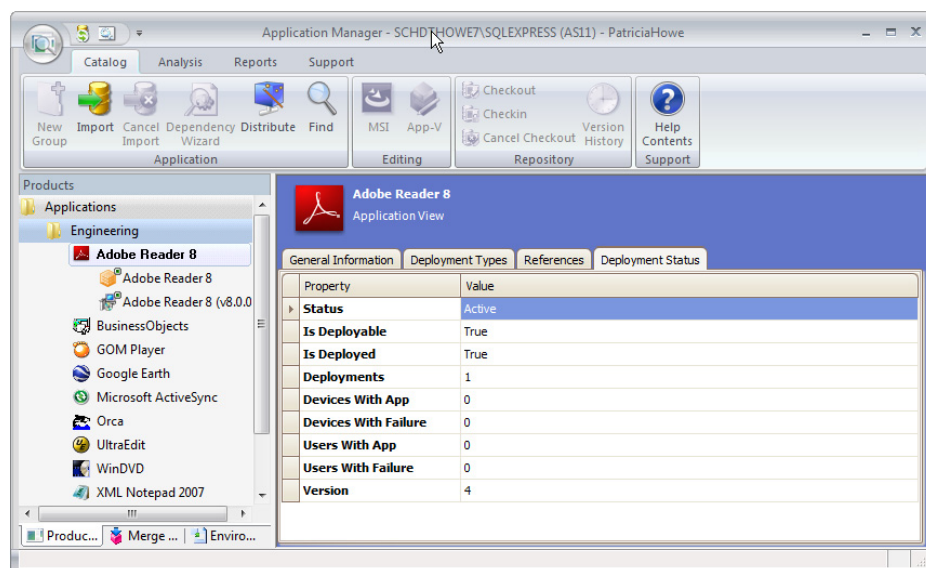
- **Supersedences**—Identifies any existing applications on the target system that this application will supersede (meaning that the application on the target system will need to be uninstalled prior to installing this application).

You can view and modify this data and add new data by editing these properties and by using the easy-to-use wizards provided on the **Detection Methods**, **Requirements**, **Dependencies**, and **Supersedence** subtabs.

The data displayed on the **Deployment Data** tab of the **Package View** corresponds to the application model data stored for applications and packages in Microsoft System Center 2012 Configuration Manager. When packages are published from the Application Catalog to Microsoft System Center Configuration Manager, this data is also published, which helps to ensure successful deployment.

## Application Metadata Access and Organization

Valuable metadata for applications is also displayed in Application Manager, including Microsoft System Center Configuration Manager deployment status.



**Figure 3:** Application View

The Application Manager **Application View** provides a tabbed interface providing the following information:

- **General Information**—Lists general application properties.
- **Deployment Types**—Lists a tabbed interface of information on all of this application's associated packages (deployment types).
- **References**—Lists applications that are dependent upon this application or that supersede this application.
- **Deployment Status**—Lists deployment status data from System Center Configuration Manager that is specific to this application.

## Publish to Microsoft System Center 2012 Configuration Manager

AdminStudio 11.0 supports publishing to both Microsoft System Center 2012 Configuration Manager and to previous releases of System Center Configuration Manager. Using AdminStudio's Distribution Wizard, you can publish both individual packages, individual applications, and groups of applications:

- **Publishing an application or group of applications**—You can publish an application or group of applications—and all of their associated deployment types (packages)—to Microsoft System Center 2012 Configuration Manager.
- **Publishing a package**—You can publish individual packages to both Microsoft System Center 2012 Configuration Manager and to earlier releases of System Center Configuration Manager.

## Software Tagging Support

AdminStudio 11.0 now supports companies' software asset management and enterprise license optimization efforts by empowering enterprises to automatically add or update ISO 19770-2 compliant tags for packages, as well as preserve the original publisher tag if it exists. This enables enterprises to leverage those ISO 19770-2 tags to identify the application after installation.

AdminStudio can automatically add ISO 19770-2 compliant tag files to your packages when an existing Application Catalog is upgraded to AdminStudio 11.0, during repackaging, and when a package is imported into the Application Catalog. You can view and edit package tag information in Application Manager on the **Software Identification Tag** tab of the **Package** View.

## Microsoft Server App-V Application Suitability Testing

Microsoft Server App-V is an upcoming virtualization offering that is designed to virtualize server applications and be an integral part of a cloud strategy. AdminStudio 11.0 is able to identify the existence of some common server components by directly scanning source Windows Installer packages. This can help to identify issues in packages that may make the package unsuitable for conversion to Server App-V. This early detection before even beginning the conversion process with the Server App-V Sequencer can accelerate the adoption of this technology.

AdminStudio 11.0 includes new virtualization suitability tests that enhance the existing desktop virtualization suitability testing as well as support the new Server App-V virtualization suitability testing. These tests check for ASP.NET and /or IIS application components, WMI provider components, J2EE application server, and unsupported applications.

## AdminStudio Platform API

AdminStudio 11.0 features the all new Platform API to integrate your existing .NET applications, or scripting environments like Microsoft PowerShell, with AdminStudio.

The AdminStudio Platform exposes the core tasks involved in the application readiness process lifecycle. Automating these core tasks via PowerShell scripts or .NET applications helps your enterprise achieve a higher throughput during this process.

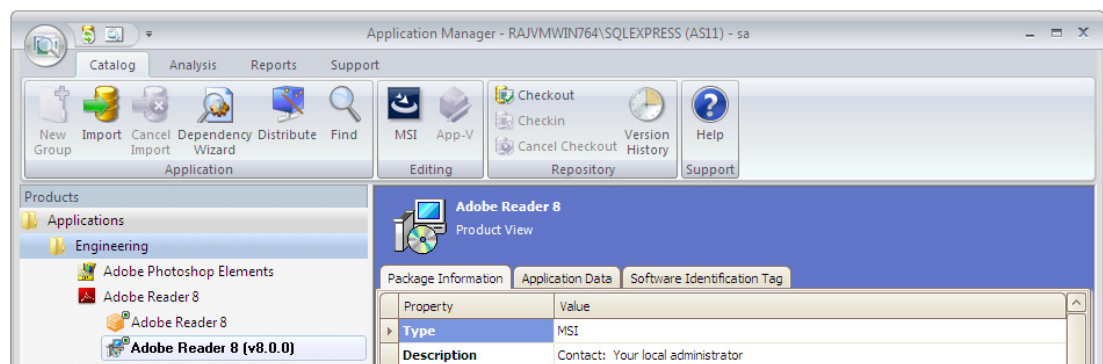
Some of the core tasks that the AdminStudio Platform API enables you to automate include:

- **Importing**—Importing existing packages into the AdminStudio Application Catalog.
  - Supports importing all the formats that are currently supported by Application Manager.
  - Supports applying transforms and patches to Windows Installer packages during import.
- **Virtualization suitability**—Checking your packages for suitability for conversion to virtual formats.
- **Virtualization**—Converting your packages to Microsoft App-V, Citrix XenApp, and VMware ThinApp virtual formats.
  - Allows you to do the conversion one package at a time, or a bulk folder conversion.
- **Testing**—Testing your packages by running conflict analysis and best practice validation tests on the packages.
- **Publishing**—Publishing your applications to Microsoft System Center Configuration Manager.

PowerShell support follows the standard Microsoft PowerShell conventions, including well-documented commands within PowerShell.

## Enhanced Application Manager User Interface With Tabbed Ribbon Control

In AdminStudio 11.0, Application Manager introduces a ribbon interface to provide quick and easy access to Application Manager tasks.



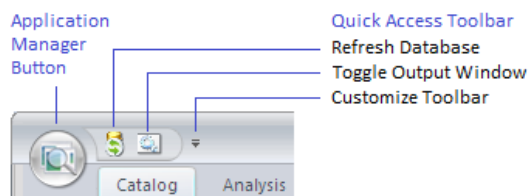
**Figure 4:** Application Manager's Ribbon Interface

The ribbon interface includes the Application Manager button menu, along with buttons that are grouped in four tabs: **Catalog**, **Analysis**, **Reports**, and **Support**.



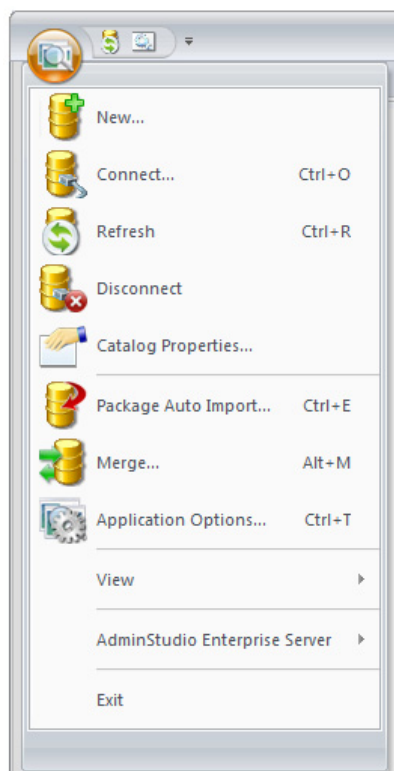
## Application Manager Button and Button Menu

The Application Manager button menu is opened by clicking the Application Manager button:



**Figure 5:** Application Manager Button and Other Controls

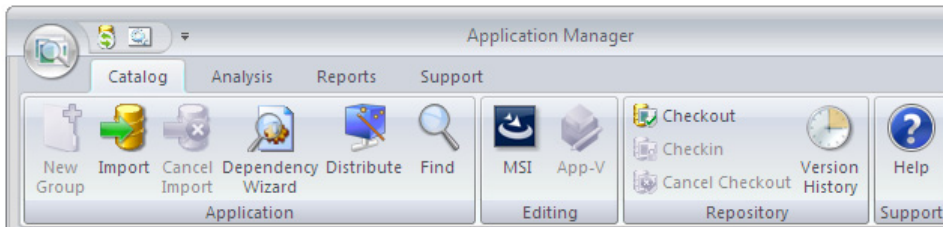
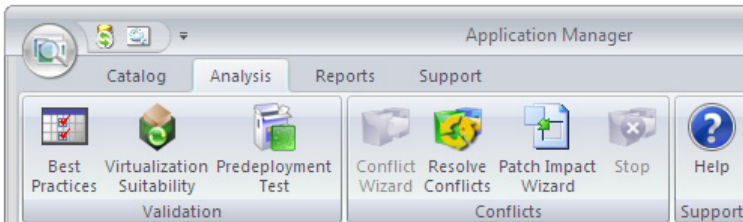
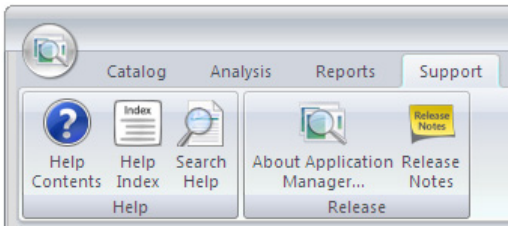
The Application Manager button menu includes database connection related tasks, as well as commands for setting catalog properties and application options, and exiting from the application.



**Figure 6:** Application Manager Button Menu

## Application Manager Ribbon Tabs

Each of the tabs in the Application Manager ribbon includes buttons to perform related tasks. As each of these tabs is selected, the Application Manager views that are displayed and the available functionality also changes, including the selections available on context menus.

Tab	Description
<b>Catalog Tab</b>	 <p>Includes buttons to import packages into the Application Catalog, edit packages, use Software Repository commands, and distribute packages.</p>
<b>Analysis Tab</b>	 <p>Includes buttons to analyze a package's readiness for deployment and to detect and resolve package conflicts.</p>
<b>Reports Tab</b>	Use to view enhanced reports on the status of the applications and packages in the Application Catalog.
<b>Support Tab</b>	 <p>Includes buttons to give you quick access to the AdminStudio help library and information specific to the current release of AdminStudio.</p>



**Important** • In previous releases, AdminStudio included two closely related tools: Application Manager and ConflictSolver. Starting in AdminStudio 11.0, all of the functionality of these two tools has been combined into one tool named Application Manager. All of the functionality previously provided in the ConflictSolver interface is now available in Application Manager.



**Note** • As part of the Application Manager reorganization, OS Snapshots are now displayed on the **Environment** tab (formerly **Patches** tab), along with OS security patches.

## InstallShield 2012

AdminStudio 11.0 includes InstallShield 2012, which offers many new features and enhancements that will help you use the latest technologies and save time on everyday tasks. New features include:

- [Ability to Create Suite Installations that Run Multiple Packages](#)
- [Redesigned, Expanded Support for Modularizing Installation Projects](#)
- [New InstallShield Prerequisites](#)
- [Support for 64-Bit Dependency Scanning](#)
- [Support for Setting Permissions for Files, Folders, and Registry Keys in 64-Bit Locations](#)
- [Improvements for COM Extraction](#)
- [New Predefined System Searches](#)
- [Support for Software Identification Tagging](#)

### Ability to Create Suite Installations that Run Multiple Packages

The Premier edition of InstallShield now lets you build a Suite installation that uses the next-generation setup launcher (Setup.exe) to conditionally run multiple installations and apply Windows Installer patches (.msp) as needed on target systems. This support is available through a new Suite project type.

The following are some highlights of this functionality:

- Ability to package multiple installations as a single installation
- Modern, customizable user interface for the installation; new editor for customizing Suite setup.exe wizard pages
- Support for combining 64-Bit and 32-Bit Windows Installer packages into a single installation
- Support for displaying a single progress bar that shows the overall status of the entire suite of packages
- Optional Add or Remove Programs entry for the Suite installation
- Support for running Suite installations without a user interface
- Default setup.exe user interface strings included for all 35 supported languages, with the ability to edit the Suite run-time strings
- Small base setup.exe file with the ability to download only the required packages as needed

## Redesigned, Expanded Support for Modularizing Installation Projects

InstallShield includes a new project type called DIM, which is known as a developer installation manifest. A DIM project is a feature-sized collection of related items such as product files, shortcuts, registry entries, text file changes, IIS Web sites, and other elements that together make up a discrete portion of a product installation. Some benefits of using DIMs are as follows:

- DIMs include support for virtually the same functionality that is available in Basic MSI projects. This gives authors of DIMs all of the flexibility that they need to develop their portions of an installation.
- Release engineers can reuse DIMs in multiple Basic MSI projects, enabling efficiency.
- Working with DIMs enables multiple team members to contribute to the development of the installation simultaneously. Each software developer or other team member can work on a separate DIM that the release engineer can reference in one or more Basic MSI projects.

## New InstallShield Prerequisites

InstallShield includes several new InstallShield prerequisites that you can add to Basic MSI, InstallScript, and InstallScript MSI projects:

- Internet Explorer 9.0
- Microsoft SQL Server 2008 R2 Native Client 10.50.1600.1
- Windows Identity Foundation
- Microsoft VSTO 2010 Runtime (x64)
- Microsoft Office 2010 PIA

## Support for 64-Bit Dependency Scanning

The Static Scanning Wizard and the Dynamic Scanning Wizard—dependency scanners in InstallShield—now include support for identifying 64-bit dependencies of the 64-bit files in your project. If you are using InstallShield on a 64-bit version of Windows Vista or later or a 64-bit version of Windows Server 2008 or later, the scanners can detect the 64-bit dependencies. The wizards let you specify whether you want to include each detected potential dependency in your project.

## Support for Setting Permissions for Files, Folders, and Registry Keys in 64-Bit Locations

InstallShield has support for setting permissions for files, folders, and registry keys in 64-bit locations for both the following project types:

- Using the custom InstallShield handling method in Windows Installer-based projects
- Using the InstallScript function `SetObjectPermissions` in InstallScript-based projects and Windows Installer-based projects

## Improvements for COM Extraction

InstallShield supports a new monitoring method for COM extraction. If you are using InstallShield on a Windows Vista or later system or a Windows Server 2008 or later system, this new method is used by default. The method uses a kernel driver to monitor the areas of the registry that are modified during dynamic COM extraction at build time and static COM extraction at design time. It combines the advantages that the earlier methods provided, allowing the DLL to read existing registries entries and preventing changes to the build machine.

## New Predefined System Searches

InstallShield has new predefined system searches for Adobe Reader 10, Internet Explorer 9, Microsoft Office 2010, Microsoft Office 2007, and Microsoft Office 2003.

## Support for Software Identification Tagging

ISO/IEC 19770-2 is an international standard for the creation of software identification tags. A software identification tag is an XML-based file that contains descriptive information about the software, such as the product name, product edition, product version, and publisher. Software asset management tools collect the data in the tags to provide accurate application identification for software that is installed in an enterprise.

Software identification tagging is evolving as an industry standard, enabling independent software vendors to create smarter applications that give their customers better information for software asset management and license optimization initiatives. Including the identification tag in your product's installation makes it possible for your customers to use tools that can monitor their internal usage of your product, allowing them to manage and optimize the number of licenses of your product that they obtain from you, and stay in compliance with your licensing policies.

InstallShield includes several new settings in the General Information view that let you specify information that is required to create an identification tag for your product. This view also contains a new Use Software Identification Tag setting that lets you specify whether you want InstallShield to create the tag at build time and include it in your installation; the default value of this setting is Yes.

## More Information

For more information on the new features and enhancements in InstallShield 2012, view the InstallShield 2012 Release Notes by selecting **Release Notes** on the InstallShield **Help** menu.

# Components/Editions

AdminStudio 11.0 is available in Standard, Professional, and Enterprise Editions. You have the option of purchasing an additional Virtualization Pack and Application Compatibility Pack. Also, functionality varies depending upon whether you have purchased the Per Admin pricing model or the Per Desktop pricing model.

Edition	AdminStudio	Virtualization Pack	Application Compatibility Pack
<b>Standard</b>	<p data-bbox="402 457 464 483"><b>Tools</b></p> <ul data-bbox="402 506 678 772" style="list-style-type: none"> <li>• Repackager</li> <li>• Distribution Wizard</li> <li>• InstallShield 2012 (Professional Edition)</li> <li>• Tuner</li> <li>• Application Isolation Wizard</li> </ul> <p data-bbox="402 804 553 829"><b>Functionality</b></p> <ul data-bbox="402 852 678 1178" style="list-style-type: none"> <li>• Windows Installer repackaging</li> <li>• Windows Installer customization</li> <li>• Preparation for distribution</li> <li>• Basic ISO tagging, including creation of tag files</li> </ul>	<p data-bbox="732 457 794 483"><b>Tools</b></p> <ul data-bbox="732 506 1024 804" style="list-style-type: none"> <li>• Automated Application Converter (Single Application Version)</li> <li>• Virtual Package Editor</li> <li>• Microsoft App-V Assistant</li> <li>• ThinApp Assistant</li> <li>• Citrix Assistant</li> </ul> <p data-bbox="732 835 883 861"><b>Functionality</b></p> <ul data-bbox="732 884 1024 1178" style="list-style-type: none"> <li>• Convert to virtual applications for common virtualization platforms including Microsoft App-V, Microsoft Server App-V, Citrix XenApp, and VMware ThinApp</li> <li>• App-V package editing</li> </ul>	N/A

Edition	AdminStudio	Virtualization Pack	Application Compatibility Pack
<b>Professional</b>	<p><b>Tools</b></p> <p>Same as <b>Standard</b>, plus:</p> <ul style="list-style-type: none"> <li>• Application Manager</li> <li>• OS Snapshot Wizard</li> <li>• QualityMonitor</li> <li>• Predeployment Test</li> </ul> <p><b>Functionality</b></p> <p>Same as <b>Standard</b>, plus:</p> <ul style="list-style-type: none"> <li>• Application management</li> <li>• Testing, validation, and conflict testing</li> <li>• Standard reporting</li> <li>• Advanced ISO tag file creation, editing, and storage</li> </ul>	<p><b>Tools</b></p> <p>Same as <b>Standard</b>, plus:</p> <ul style="list-style-type: none"> <li>• Automated Application Converter (Single Application Version) with Virtualization Suitability Testing</li> </ul> <p><b>Functionality</b></p> <p>Same as <b>Standard</b>, plus:</p> <ul style="list-style-type: none"> <li>• Test for virtualization suitability for common virtualization platforms including Microsoft App-V, Microsoft Server App-V, Citrix XenApp, and VMWare ThinApp.</li> <li>• Store App-V data in Application Manager</li> <li>• App-V package testing, validation, and conflict testing</li> <li>• Automated conversion of legacy packages to Windows Installer</li> </ul>	<p><b>Tools &amp; Functionality</b></p> <p><b>Compatibility Solver</b> with the following functionality:</p> <ul style="list-style-type: none"> <li>• Single database connection</li> <li>• Summary (not package-specific) compatibility assessment</li> <li>• Application testing and reporting for Windows 7 and 64-bit Windows</li> <li>• Auto-fixing for Windows 7 and 64-bit Windows</li> </ul> <hr/> <p><b>Note</b> • For more information, see <a href="#">Edition-Specific Functionality in Compatibility Solver</a>.</p>
<b>Professional Complete</b>	Includes Professional Edition with both the <b>Virtualization Pack</b> and the <b>Application Compatibility Pack</b> .		

Edition	AdminStudio	Virtualization Pack	Application Compatibility Pack
<b>Enterprise (Per Admin)</b>	<p><b>Tools</b></p> <p>Same as <b>Professional</b>, plus:</p> <ul style="list-style-type: none"> <li>● InstallShield 2012 (Premier Edition)</li> <li>● PackageExpert</li> <li>● OS Security Patch Wizard</li> <li>● Job Manager</li> <li>● Report Center</li> <li>● Software Repository</li> <li>● Security Console</li> </ul> <p><b>Functionality</b></p> <p>Same as <b>Professional</b>, plus:</p> <ul style="list-style-type: none"> <li>● Application Readiness Dashboard</li> <li>● Process and workgroup management features</li> <li>● API features to enable automation of tasks including package import, virtualization, testing/analysis, and distribution</li> </ul>	<p><b>Tools</b></p> <p>Same as <b>Professional</b>, plus:</p> <ul style="list-style-type: none"> <li>● Automated Application Converter (Multiple Application Version) with Suitability Testing</li> </ul> <p><b>Functionality</b></p> <p>Same as <b>Professional</b>, plus:</p> <ul style="list-style-type: none"> <li>● Automated conversion of multiple packages to virtual applications</li> <li>● Automated conversion of multiple legacy packages to Windows Installer</li> <li>● Application Readiness Dashboard (Including Virtualization Reports)</li> </ul>	<p><b>Tools &amp; Functionality</b></p> <p>All of the <b>Compatibility Solver</b> functionality available in <b>Professional</b>, plus:</p> <ul style="list-style-type: none"> <li>● Multiple database connections, with ability to merge databases</li> <li>● Detailed per-package compatibility assessment and cost/effort reports</li> <li>● Application testing and reporting for Windows Server 2008 and 2008 R2</li> <li>● Auto-fixing for Windows Server 2008 and 2008 R2</li> </ul> <hr/> <p><b>Note</b> • For more information, see <a href="#">Edition-Specific Functionality in Compatibility Solver</a>.</p>
<b>Enterprise (Per Admin) Complete</b>	Includes Enterprise Edition (Per Admin) with both the <b>Virtualization Pack</b> and the <b>Application Compatibility Pack</b> .		



Edition	AdminStudio	Virtualization Pack	Application Compatibility Pack
<b>Enterprise (Per Desktop)</b>	<b>Tools &amp; Functionality</b> Same as <b>Enterprise (Per Admin)</b>	<b>Tools &amp; Functionality</b> Same as <b>Enterprise (Per Admin)</b>	<b>Tools &amp; Functionality</b> All of the <b>Compatibility Solver</b> functionality available in <b>Enterprise (Per Admin)</b> , plus: <ul style="list-style-type: none"> <li>• Testing of multiple applications simultaneously</li> <li>• Loading of multiple applications simultaneously</li> <li>• Fixing of multiple applications simultaneously</li> </ul> <b>Web Application Compatibility Pack (Optional Add-On)</b> <ul style="list-style-type: none"> <li>• Test compatibility of web applications with Internet Explorer 8.0 and 9.0</li> <li>• Test integration of desktop applications with Internet Explorer 8.0 and 9.0</li> </ul>
<b>Enterprise (Per Desktop) Complete</b>	Includes Enterprise Edition (Per Desktop) with both the <b>Virtualization Pack</b> and the <b>Application Compatibility Pack</b> . <i>Note • Web Application Compatibility Pack is available as an optional add-on feature.</i>		

***Note •** For more information, see [Edition-Specific Functionality in Compatibility Solver](#).*

## Edition-Specific Functionality in Compatibility Solver

Compatibility Solver is included in the AdminStudio Application Compatibility Pack. The functionality that is available in Compatibility Solver depends on which edition of AdminStudio that you are using.

Functionality		Professional Edition	Enterprise (Per Admin) Edition	Enterprise (Per Desktop) Edition
<b>Multiple database connections, with ability to merge databases</b>			✓	✓
<b>Summary (not package-specific) compatibility assessment</b>		✓	✓	✓
<b>Detailed per-package compatibility assessment and cost/effort reports</b>			✓	✓
<ul style="list-style-type: none"> <li>• Profile</li> <li>• Profile (Post-Fixing)</li> <li>• Packages By Status</li> <li>• Report Group By Status</li> <li>• Report By Status</li> </ul>				
<b>Available reports (plugins)</b>	Windows 7	✓	✓	✓
	64-bit Windows	✓	✓	✓
	Windows Server 2008 and 2008 R2		✓	✓
	Internet Explorer 8.0 and 9.0 Compatibility for Web Applications			✓ Available only with Web Application Compatibility Pack
	Internet Explorer 8.0 and 9.0 Integration for Desktop Applications			✓ Available only with Web Application Compatibility Pack
<b>Automatic fixing of package issues</b>	Windows 7	✓	✓	✓
	64-bit Windows	✓	✓	✓
	Windows Server 2008 and 2008 R2		✓	✓

Functionality	Professional Edition	Enterprise (Per Admin) Edition	Enterprise (Per Desktop) Edition
Test multiple applications simultaneously			✓
Load multiple applications simultaneously			✓
Fix multiple applications simultaneously			✓



**Note** • If you are using AdminStudio Enterprise Per Desktop in evaluation mode, the functionality in Compatibility Solver is limited to a single database connection. During the evaluation period, you can import, test, and fix a maximum of 10 packages through Compatibility Solver. If you do not activate AdminStudio within the evaluation period, Compatibility Solver will stop working when the trial period has ended. You can activate AdminStudio at any time before or after the evaluation period has ended.

# System Requirements

This section lists the requirements for AdminStudio client tool machine, Application Catalog database server, Web server, Software Repository server, and virtual machines.

## AdminStudio Client Tool Machine

The following table lists the recommended system configuration for a machine running the AdminStudio client tools (including Compatibility Solver).

Item	Description
<b>Processor</b>	32-bit (x86) or 64-bit (x64) processor at 1 GHz or greater
	<i><b>Note</b> • All of the AdminStudio client tools run on 64-bit Windows operating systems. To repackaging 64-bit applications or create 64-bit App-V packages, install AdminStudio on a 64-bit Windows operating system.</i>
<b>RAM</b>	1 GB
<b>Hard Disk</b>	4.0 GB
<b>Display</b>	Designed for XGA at 1024 x 768 resolution or higher
<b>Operating System</b>	Windows 7, Windows Vista, Windows XP (SP1 or later is recommended), or Windows Server 2003 or later. Predeployment Test and Configuration Manager Web Console require Microsoft IIS 5 or later.
<b>Browser</b>	Microsoft Internet Explorer 5.5 or later
<b>Privileges</b>	Administrative privileges on the system

# Application Catalog / Compatibility Solver Database Server

The following table lists the recommended system configuration for a database server to store AdminStudio Application Catalog databases or Compatibility Solver databases.

Item	Description
<b>Processor</b>	32-bit (x86) or 64-bit (x64) processor at 1 GHz or greater
<b>RAM</b>	1 GB or greater (2 GB preferred)
<b>Hard Disk Space</b>	80 GB or greater
<b>Operating System</b>	Windows Server 2003 or later
<b>Database Software</b>	SQL Server 2005 or later databases. SQL Server must be installed with case-insensitive dictionary sort order and ISO-8859-1 character set. (Use <code>sp_helpsort</code> T-SQL command for more information.)
<p><b>Note</b> • Before attempting to connect to an existing Microsoft SQL Server, open SQL Server Configuration Manager and make sure that the following three protocols are enabled:</p> <ul style="list-style-type: none"> <li>• Shared Memory</li> <li>• Named Pipes</li> <li>• TCP/IP</li> </ul>	

# AdminStudio Enterprise Server / Workflow Manager Server

The following table lists the recommended system configuration for a machine running the AdminStudio Enterprise Server tools (Security Console, Report Center, Job Manager) and/or Workflow Manager.

Item	Description
<b>Processor</b>	32-bit (x86) or 64-bit (x64) processor at 1 GHz or greater
<b>RAM</b>	1 GB or greater (2 GB preferred)
<b>Hard Disk Space</b>	100 GB or greater
<b>Operating System</b>	Windows Server 2003 or later
<b>IIS</b>	IIS 6.0 or later
	<i><b>Note</b> • AdminStudio Web Server also supports IIS 7.0 or later if IIS 6.0 compatibility mode is turned on.</i>
<b>.NET</b>	.NET Framework 3.5 SP1 (including ASP.NET 3.5 SP1 registered with IIS)
<b>MSXML</b>	MSXML 4.0
<b>Running on a Domain Controller</b>	If running on a domain controller, you will have to implement one of the procedures described in the Microsoft Developer Network topic <a href="#">Running ASP.NET on a Domain Controller</a> , available at:  <a href="http://msdn2.microsoft.com/en-us/library/aa579070.aspx">http://msdn2.microsoft.com/en-us/library/aa579070.aspx</a>

## Software Repository Server

The following tables lists the recommended system configuration for the machine that stores the Software Repository files.

Item	Description
<b>Processor</b>	512 MHz or greater
<b>RAM</b>	512 MB or greater
<b>Hard Disk Space</b>	100 GB or greater
<b>Operating System</b>	Windows Server 2003 or later

# Virtual Machines



**Edition** • Automated Application Converter is included in the AdminStudio Virtualization Pack.

Automated Application Converter performs automated repackaging on virtual machines. This section lists the virtual machine platform and virtual machine image system requirements.

- [Supported Virtual Machine Platforms](#)
- [VMware Requirements](#)
- [Microsoft Hyper-V Server Requirements](#)
- [Virtual Machine Image Requirements](#)

## Supported Virtual Machine Platforms

The Automated Application Converter supports automated repackaging on virtual machines from the following platforms:

- VMware ESX/ESXi Server, Version 3.5 Update 3 or later
- VMware Workstation 6.5 or later
- Microsoft Hyper-V Server 2008 R2 or later

## VMware Requirements

As described above, Automated Application Converter supports automated repackaging on VMware ESX/ESXi Server and VMware Workstation.

- [VMware VIX API Requirement](#)
- [VMware ESX/ESXi Server Permission Requirements](#)

### VMware VIX API Requirement

In order for the Automated Application Converter to perform automated repackaging, it needs to communicate with the virtualization technology that you are using. If you are using VMware virtualization technology (VMware ESX or ESXi Server or a local VMware Workstation), you need to have the VMware VIX API installed on the same machine as the Automated Application Converter. You can do this by either installing VMware Workstation on that machine or by downloading and installing the VMware VIX API from the following location:

<http://www.vmware.com/support/developer/vix-api>



**Note** • It is recommended that you always install the latest version of VMware VIX so that you have the most options and the latest bug fixes.

## VMware ESX/ESXi Server Permission Requirements

If you plan to use a VMware ESX/ESXi Server in conjunction with Automated Application Converter, make sure that the account that you use to log in to this server has the permissions/roles needed to automatically open a VM using VMware VIX API. The account needs to either have an administrator role assigned or, at least, have the following three roles assigned:

- All Privileges/Virtual Machine/State/Create Snapshot
- All Privileges/Virtual Machine/State/Delete Snapshot
- All Privileges/Virtual Machine/Interaction/Console Interaction

If the login account does not have these permissions/roles, Automated Application Converter will be unable to automatically boot up a virtual machine on that server.

## Microsoft Hyper-V Server Requirements

As described above, Automated Application Converter supports automated repackaging on Microsoft Hyper-V Server. When preparing a Hyper-V Server for use with Automated Application Converter, make sure that the following conditions are met:

- **Configuration tools**—Verify that the Hyper-V configuration tools are installed on the Hyper-V server machine. These tools can be installed using the Microsoft Hyper-V Management Console.
- **Connection**—Verify that you can successfully connect to the Hyper-V Server from the machine where AdminStudio Automated Application Converter is installed.
- **Permissions**—Make sure that the Hyper-V Server user has the following permissions to perform operations on the Hyper-V machines:
  - Permission to create/restore/delete VM snapshots
  - Permission to start and stop virtual machines
  - Permission to access console sessions
- **Configuration settings**—Connecting to a WMI namespace on a remote computer running Windows Vista or Windows Server 2008 may require changes to configuration settings. Check the following configuration settings on the AdminStudio machine as well as on the Hyper-V Server machine:
  - Windows Firewall Settings
  - User Account Control (UAC) Settings
  - DCOM Settings
  - Common Information Model Object Manager (CIMOM) Settings

For detailed information, see [Connecting to WMI Remotely](#) at:

[http://msdn.microsoft.com/en-us/library/aa822854\(VS.85\).aspx](http://msdn.microsoft.com/en-us/library/aa822854(VS.85).aspx)



## Virtual Machine Image Requirements

Automated Application Converter uses virtual machines to perform automated repackaging. These virtual machines have the following requirements:

### Virtual Machine System Requirements

When creating a virtual machine image that will be hosted on one of the virtual machine platforms listed above, the recommended minimum requirements should meet those required by the applications you are trying to repackage. Since you repackage on the target deployment platform, the virtual machine image should closely resemble the target deployment environment.

### Preparing Your Virtual Machines for Use With the Automated Application Converter

You need to prepare each virtual machine that you are going to use with the Automated Application Converter to perform automated repackaging by running the Virtual Machine Preparation setup and by creating a snapshot. For instructions, see [Preparing Your Virtual Machines for Use With the Automated Application Converter](#).

# Resolved Issues

The following table lists the customer issues that were resolved in AdminStudio 11.0:

Issue Number	Issue Summary
<b>IOA-000062680</b>	In both AdminStudio 10 and InstallShield 2011 Editor, you are unable to bookmark a help topic in the help library.
<b>IOA-000062690</b>	Need documentation on how the the Proxy Account needs to be configured for use with the Software Repository
<b>IOA-000062809</b>	Repackaging through Automated Application Converter captures extra System32 files on Windows 7 machines.
<b>IOA-000062828</b>	Request for an installation guide for AdminStudio 10 Compatibility Solver.
<b>IOA-000063101</b>	Stop signing the AMSSLACompliance.exe service in Workflow Manager.
<b>IOA-000063317</b>	Switch to ISLockPermissions table entries for AdminStudio install.
<b>IOA-000063845</b>	ConflictSolver indicates that there are “no available resolutions” for automatically resolvable conflicts.
<b>IOA-000063846</b>	ConflictSolver does not fix conflict WTS01 using the WTSFIX01.
<b>IOA-000064050</b>	Customer reported that Compatibility Solver requirements are not listed in the AdminStudio Installation Guide.
<b>IOA-000064092</b>	Additional ACESDK files need to be installed into the ConflictSolver\ACESDK folder by the setup.
<b>IOA-000064093</b>	Request to document VS 2008 steps to use the ACE SDK instead of VC++ 6.0 steps.
<b>IOA-000064503</b>	Add some default entries to Global Exclusions list in Repackager.
<b>IOA-000065789</b>	In Windows 2008 R2 (x64), the file and original file location is truncated in Application Manager even though there is plenty of space.
<b>IOA-000065960</b>	ThinApp packages build to the. wrong folder causing the wrapper MSI to contain no files
<b>IOA-000066264</b>	App-V Runtime drive defaults to Q: after saving an App-V package in Virtual Package Editor.
<b>IOA-000067393</b>	Update information on AMSFileRoot and File Share Path.
<b>IOC-000059241</b>	-x should be used for VMWare Repackaging Wizard.